

Claridge Pointe Homeowners Association is outlined in white. CPHOA contains 101 manufactured homes on Real Property mandated to always be Real Property as defined by our amended C C & R's. CPHOA is located in the Raleigh Heights section of Reno, Nevada 89506 and is situated between the 7500 and 7900 blocks of North Virginia Street. Claridge Pointe contains five streets including: Brookshire Drive, Diamond Pointe Way, North Claridge Pointe Parkway, Platinum Pointe Way, and South Claridge Pointe Parkway.

During a snow storm, Board members will open the gates at the intersection of South Claridge and Wellington Way, South Claridge and Lancaster Drive, North Claridge and Lancaster and Brookshire and North Virginia Street.

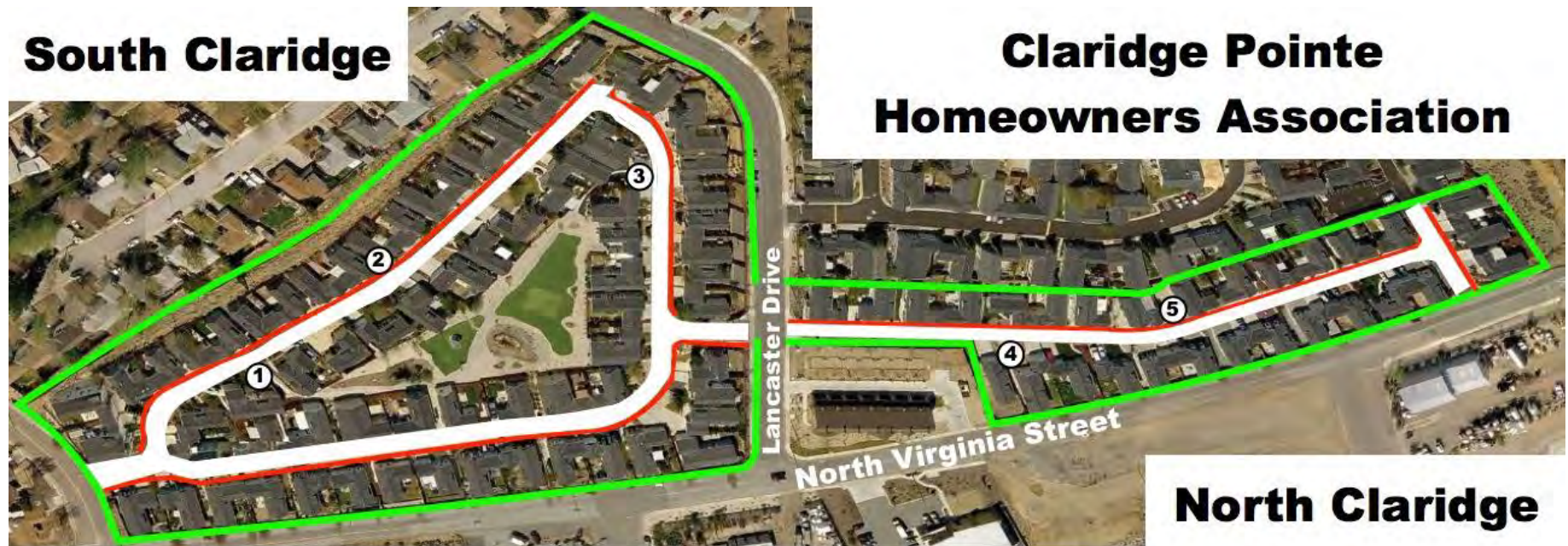
Snow **MUST** be removed from **ALL** the streets, parking areas, and sidewalks within Claridge Pointe. Snow may **NOT** be piled in front of any fire gate, homeowner's front yards, or anywhere within Claridge Pointe! Due to the fact that there is little to no space to pile snow, excess snow must be hauled away.

The **GREEN** outline represents the boundary area of Claridge Pointe Homeowners Association.

The **RED** line represents sidewalks which must be cleared of snow.

The **WHITE** line represents the streets within Claridge Pointe Homeowners Association which include Brookshire Drive, North Claridge Pointe Parkway, South Claridge Pointe Parkway, Platinum Pointe Way, and Diamond Pointe Way, which must be cleared of snow

The numbered areas represent parking and mailboxes, shown on page three, and must be cleared of snow.



Claridge Pointe HOA C/O Kenyon & Associates; 645 Sierra Rose Drive; Suite 105A; Reno, NV 89511
FY 2016 Snow Removal Policy Date: 11/9/2015

The Board requires snow removal from the five parking areas and mailbox areas. Claridge Pointe has no space for snow piles therefore snow must be hauled away.

