

Adult Recreational Area Drainage System

French Drain piping, shown in red, installed by WES Construction Circa 2005 under stone path.



7545 SCP

7535 SCP

Adult Recreational Area Drainage System

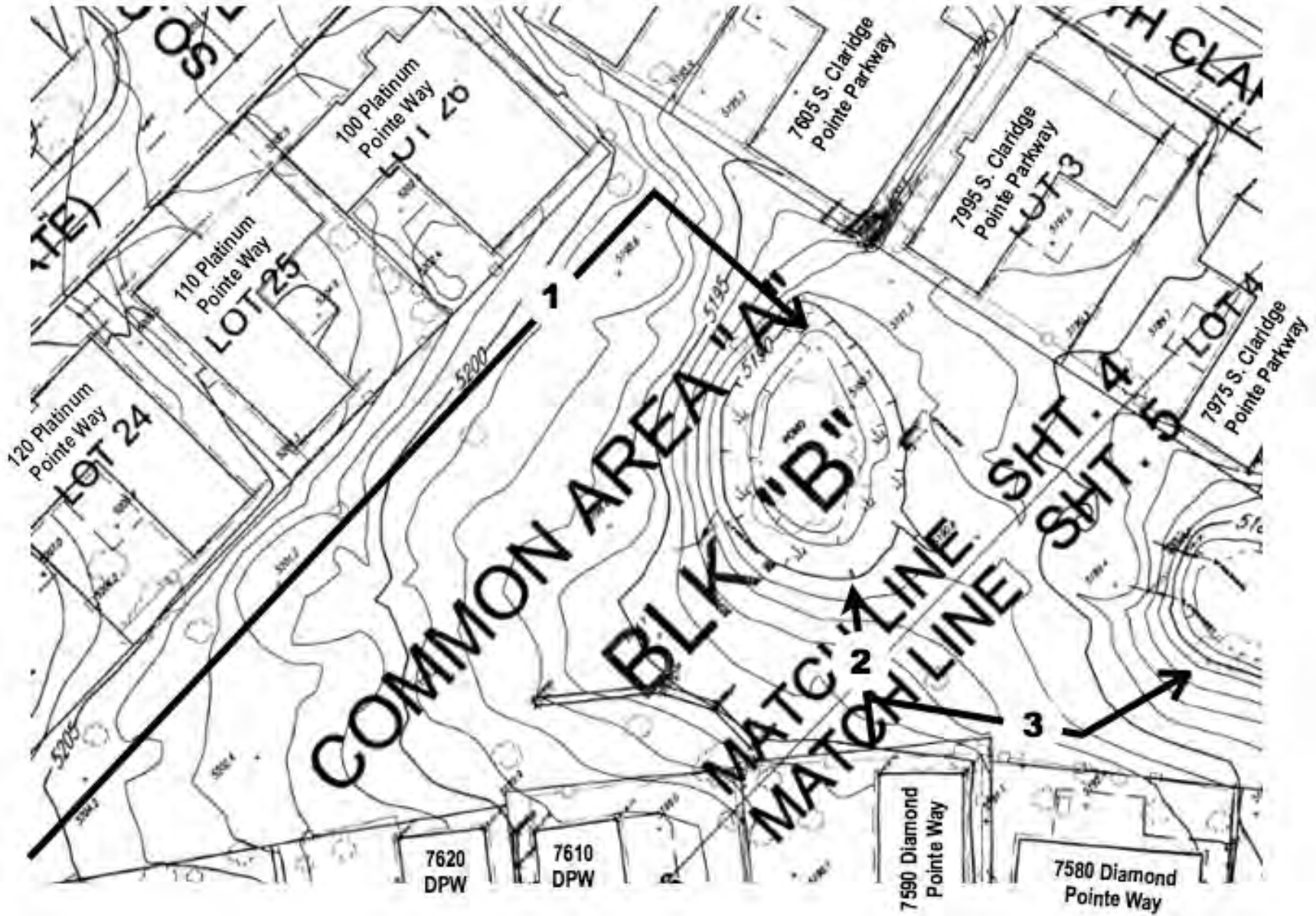
Three new sections of surface drain pipe.



Installed Circa 2013

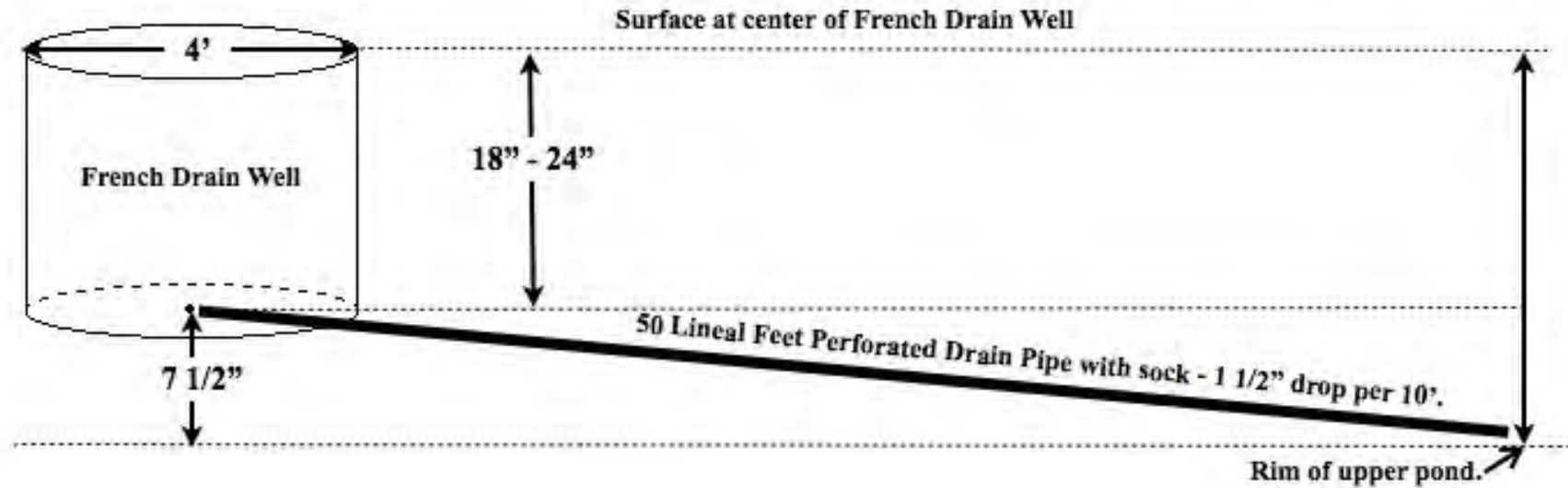
Adult Recreational Area Drainage System

Golf Course Topographic & Elevation Map

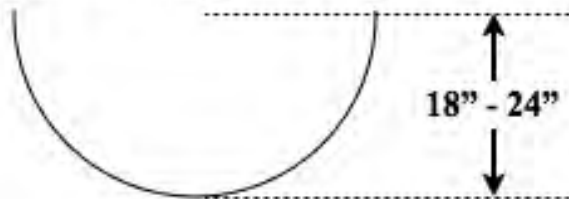


Adult Recreational Area Drainage System

Typical Detail Section for Surface Drainage



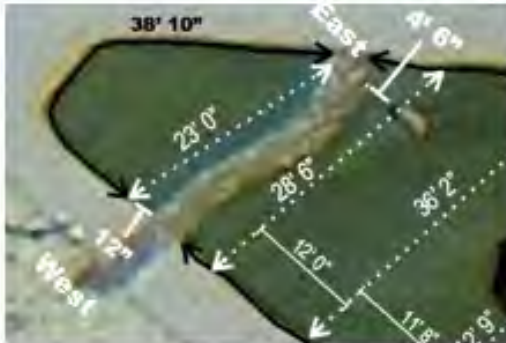
Cross section of drainage trench lined with Drain Fabric.



Section #2 Shown

Adult Recreational Area Drainage System

Detail Section for Surface Drain Line #2



Remove 23' "sliver" section of artificial turf as shown in pictures below. Remove rock from old trench and place it back in the upper pond. Remove "sliver" section of artificial turf and dig a path from "French Drain" well to "Upper Pond." Install drain fabric in 18" to 24" deep trench and lay 50' LF of 4" perforated drain pipe covered with drain sleeve. Refill trench with "Path" rock.



West



West



East

Installed Circa 2013

Adult Recreational Area Drainage System

Video Surveillance Camera Buried Coax Cable

