

# Claridge Pointe Homeowners Association Visitor Parking and Mailbox Parking

Plot plan prepared by Bigby and Associates and submitted September 10, 2003

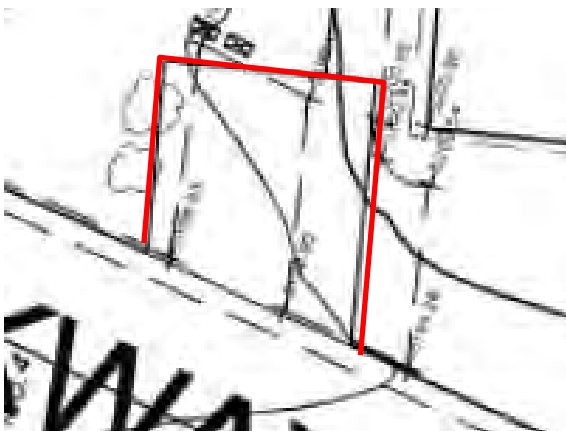


<b>B</b> <b>BIGBY AND ASSOCIATES</b> 8175 SO. VIRGINIA, SUITE 850 - #211 RENO, NEVADA 89511 (775) 851-0432	DATE:	09/10/03
	SCALE:	1"=100'
	DRAWN BY:	MRG/GAB
	DESIGNED BY:	
	CHECKED BY:	GAB

## North Claridge Mail Box 5 Minute Parking and One Visitor Parking space



## North Claridge One Visitor Parking space between 7740 and 7750 North Claridge Pointe Parkway



**Claridge Pointe Homeowners Association  
 Visitor Parking and Mailbox Parking  
 Original plan filed with the City of Reno October 12, 1995**

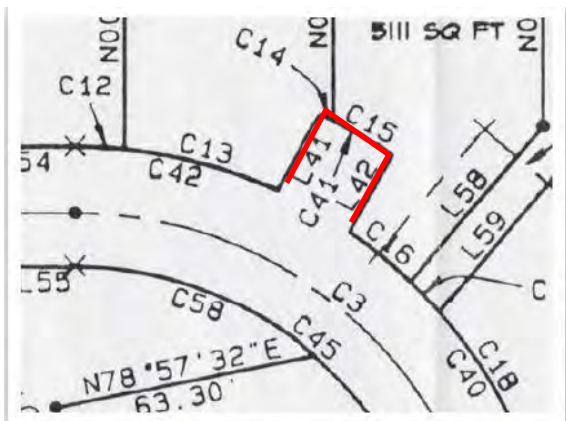
<p><b>BASIS OF BEARINGS</b></p> <p>IDENTICAL TO SUBDIVISION TRACT MAP NO. 850, FILED ON THE 2ND DAY OF APRIL, 1965 IN THE RECORDS OF WASHOE COUNTY, NEVADA AS FILE NO. 24441, AND WAS DETERMINED FROM THE MONUMENTS SHOWN AS FOUND.</p>	
<p align="center"><b>OFFICIAL PLAT</b></p> <p align="center"><b>CLARIDGE POINTE ON THE GREEN</b></p> <p align="center">BEING A PORTION OF THE N 1/2 OF THE N 1/2 OF SECTION 22          TOWNSHIP 20 NORTH RANGE 19 EAST          MOUNT DIABLO MERIDIAN</p>	
<p>RENO</p> <p><b>TRI STATE SURVEYING, LTD.</b>          1025 E. PRATER WAY          SPARKS, NEVADA 89434          (702) 358-9491 • FAX # 358-3664</p>	<p>NEVADA</p> <p>JOB #87025.00</p> <p>SHEET <b>2</b> OF <b>2</b></p>
<p>FILE NO. <b>1933200</b></p> <p>FILED FOR RECORD AT THE REQUEST OF <u>Distinctive Homes</u> ON THIS <u>12</u> DAY OF <u>Oct.</u> 199<u>5</u> AT <u>39</u> MIN. PAST <u>2</u> O'CLOCK <u>P.M.</u> OFFICIAL RECORDS OF <u>Washoe</u> COUNTY, NEVADA.</p> <p>BY: <u>Joe Melcher</u> COUNTY RECORDER</p> <p>DEPUTY: <u>C. Bartley</u> FEE: <u>60.20</u></p>	

**South Claridge Visitor Parking spaces between 7591 and 7601 Diamond Pointe Way**



**South Claridge Visitor Parking spaces between 7680 and 7690 South Claridge Pointe Parkway.**

**The builders improperly located parking in front of 7680 SCP. The Association owns the land as shown on plot plan and in picture.**





**Claridge Pointe Homeowners Association  
 Visitor Parking and Mailbox Parking  
 Original plan filed with the City of Reno October 12, 1995**

<p><b>BASIS OF BEARINGS</b></p> <p>IDENTICAL TO SUBDIVISION TRACT MAP NO. 850, FILED ON THE 2ND DAY OF APRIL, 1965 IN THE RECORDS OF WASHOE COUNTY, NEVADA AS FILE NO. 24441, AND WAS DETERMINED FROM THE MONUMENTS SHOWN AS FOUND.</p>	
<p align="center"><b>OFFICIAL PLAT</b></p> <p align="center"><b>CLARIDGE POINTE ON THE GREEN</b></p> <p align="center">BEING A PORTION OF THE N 1/2 OF THE N 1/2 OF SECTION 22          TOWNSHIP 20 NORTH RANGE 19 EAST          MOUNT DIABLO MERIDIAN</p>	
<p>RENO</p> <p><b>TRI STATE SURVEYING, LTD.</b></p> <p>1025 E. PRATER WAY          SPARKS, NEVADA 89434          (702) 358-9491 • FAX # 358-3664</p>	<p>NEVADA</p> <p>JOB #87025.00</p> <p>SHEET <b>2</b>          OF <b>2</b></p>
<p>FILE NO. <b>1933200</b></p> <p>FILED FOR RECORD AT THE REQUEST OF <u>Distinctive Homes</u> ON THIS <u>12</u> DAY OF <u>Oct.</u> 199<u>5</u> AT <u>39</u> MIN. PAST <u>2</u> O'CLOCK, <u>P.M.</u> OFFICIAL RECORDS OF <u>Washoe</u> COUNTY, NEVADA.</p> <p>BY: <u>Joe Melcher</u>          COUNTY RECORDER</p> <p>DEPUTY: <u>C. Bartley</u>          FEE: <u>60.20</u></p>	

**South Claridge Visitor Parking between 7540 and 7550 Diamond Pointe Way**



**South Claridge Pointe Parking, four Visitors slots and three 5 minute mailbox parking slots between 140 Platinum Pointe Way and 7660 Diamond Pointe Way.**

